

# IMAGE Management, LLC

1501 Chester Road, Raleigh, NC 27608-2023  
(919) 829-1479 (Voice) (888) 462-4346 (Toll Free)  
(919) 832-1412 (Fax)  
web site: [www.Image-Management.com](http://www.Image-Management.com)  
email: [Info@Image-Management.com](mailto:Info@Image-Management.com)



## Using the Plantronics Calisto I Microphone with your Dragon® Speech Recognition Software

### Overview/Support Facts

This device is supported on Windows 10/8/7/Vista and XP. Installation involves a plug and play USB Bluetooth adapter, requiring no software.

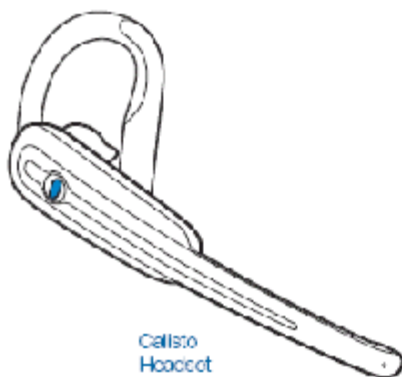
PCs meeting the minimum PC requirements stated for the Dragon® software application are able to support this input device.

The range for the Calisto Bluetooth headset is specified at 30 feet (line of sight), although audio degradation may be noticed past ten (10) away.

This device is listed as "Nuance Certified" in Nuance's Hardware Compatibility List with an accuracy rating of four (4) Dragons.

### Package Contents

This Plantronics Calisto package contains the Calisto Headset, a USB Bluetooth adapter, and a USB charging cable.



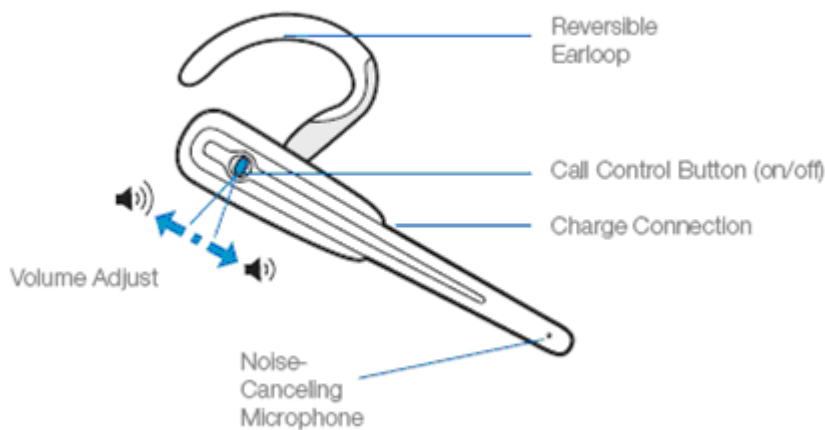
## Product Features

### Plantronics Calisto Headset

Headset operation with the Dragon® software application is simple.

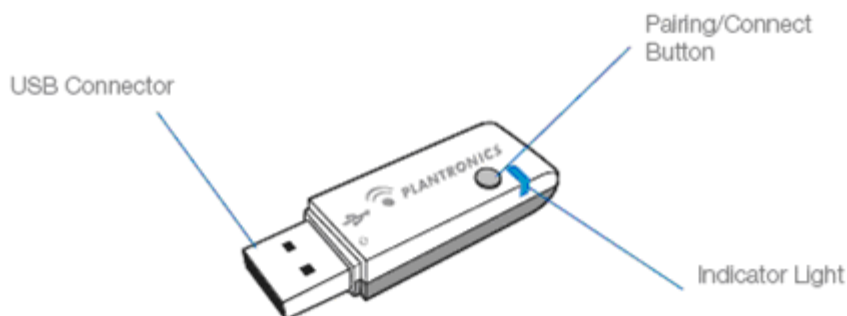
Pressing the Call Control button inward towards the ear for less than one (1) second will toggle the microphone on/off.

Pressing the Call Control button forward towards the microphone will increase the playback volume and record gain. Conversely, pressing the button backward will decrease the volume/gain.



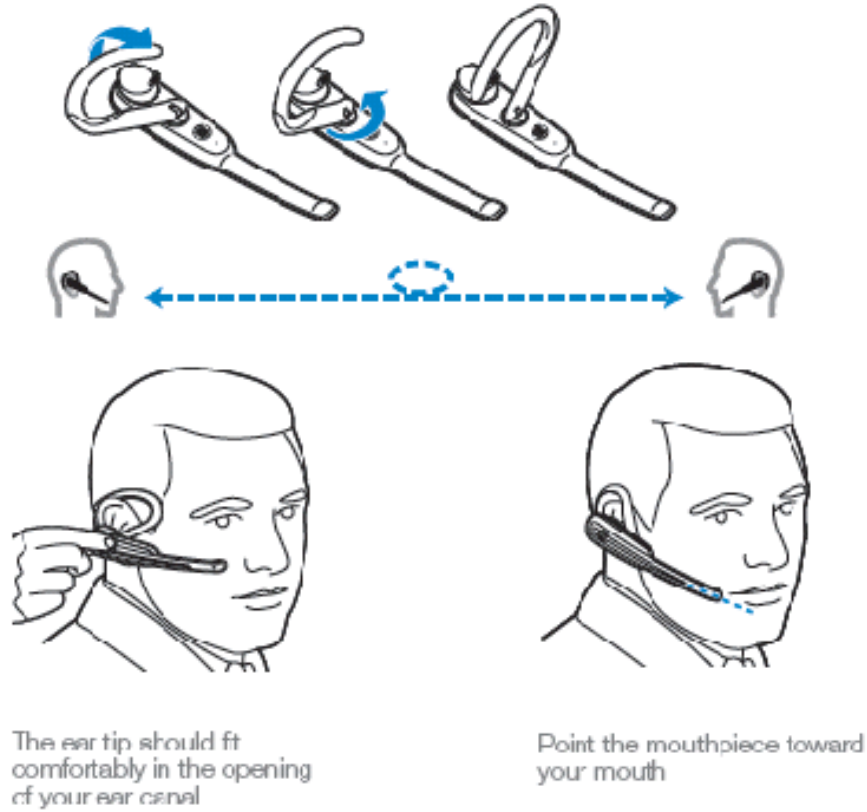
### USB Bluetooth Adapter

**CAUTION** Gently "pinch" the adapter, if needed, with both fingers to avoid damaging the adapter or USB port.



## Wearing the Headset

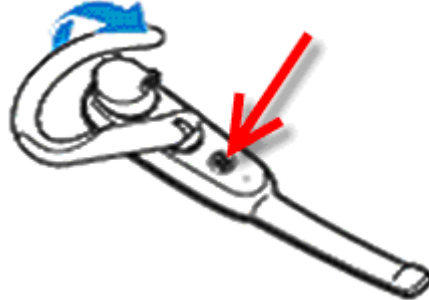
The headset can be worn on your left or right ear. To switch between ears, flip the ear loop to the side, and twist around.



## Charging the Headset

The Plantronics Calisto headset must be charged prior to first use.

1. Connect the USB Headset Charger cable provided to a USB port on the computer
2. Connect and snap the other cable end into the headset as pictured below.



The headset indicator light glows solid red while charging and turns solid blue when the headset is fully charged.

**IMPORTANT** Charge the headset for a minimum of **2 hours** or until the headset light turns blue prior to first use.

**IMPORTANT** Do not use headset while charging and do not connect the USB Charger cable while headset is in use.

Battery talk time is up to **8 hours**.

## Install the USB Bluetooth Adapter

The USB Bluetooth adapter is automatically powered on when inserted into a USB port on the computer. This adapter is installed using Windows plug and play, requiring no software. It is supported with Windows XP and Vista.

1. Remove the cap from the Bluetooth adapter to reveal the USB connector.
2. Plug the adapter directly into a USB port on the computer.



## Powering the Headset

The headset comes "pre-paired" with the USB Bluetooth adapter, and (if the headset is within the 30' range) will automatically connect to the adapter when powered on.

### Powering up Headset

Press and hold the Headset button for two (2) seconds. Four (4) ascending beeps will sound when powered on.

### Powering down Headset

Press and hold the Headset button for four (4) seconds. Four (4) descending beeps will sound when powered off.

**NOTE:** The headset automatically powers up when it is charging.

## Headset and USB Bluetooth Adapter Indicators/Alerts

### Headset Indicator Lights

Action	Button Action	Sounds	Indicator Lights
Turn headset on	Press and hold for 2 seconds	4 ascending beeps	Flashes blue every 10 seconds
Turn headset off	Press and hold for 4 seconds	4 descending beeps	
Turn microphone on/off	Press for 1 second	1 high beep	
Adjust volume	Press up or down (not inward)	2 beeps when max/min volume reached	

### Headset Alerts

Alert	Sounds	Indicator Lights
Low battery	3 beeps every 30 seconds	Flashes red 3 times every 3 seconds
Charging		Glows solid red
Fully charged		Glows solid blue while connected to charger

Section is continued on next page.

## Headset and USB Bluetooth Adapter Indicators/Alerts (continued from prior page)

### Bluetooth USB Adapter Indicator Lights

Action	Indicator Lights
Disconnected from the headset	Flashes purple
Connected to the headset	Solid blue
Radio link active	Flashes blue
Pairing mode	Flashes red and blue

## Using your new BlueTooth microphone within Dragon

Dragon® must know what device you are using so it knows where the audio input is coming from – regardless of the microphone.

There are two general scenarios:

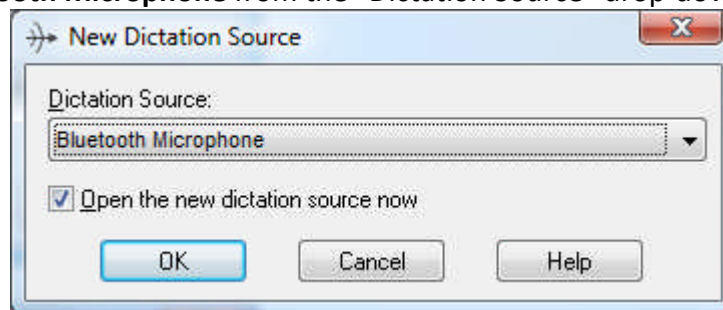
1. Scenario 1: You are already a Dragon® user and this microphone will be the second (or third...) speech device you use with Dragon.
  - What to do?  
Add a dictation source to current user profile
2. OR, you are a new Dragon® user and this microphone will be the first speech device you use with Dragon®.
  - What to do?  
Create a new user profile with this microphone as your dictation source

**NOTE:** Menu choices and the appearance of dialog boxes will vary slightly depending on your version/edition of Dragon®.

### Scenario 1: Already a Dragon® user, so set up new dictation source for current user

To add a new dictation source to the current user profile:

1. Power on the Headset. The USB Bluetooth adapter should flash blue every one (1) second while the Headset flashes blue every four (4) seconds to indicate the Headset is ready to record.
2. Place the Headset around your ear.
3. Click **Profile > “Add Dictation Source to Current User Profile” or “Manage Dictation Sources”**  
Or **Profile > Open User Profile > Source > New**
4. Depending on your Dragon® version, you may need to make an extra selection to **“Add Dictation Source”**
5. Depending on Dragon® version, you will see a list of available microphone inputs. Choose **BlueTooth Microphone** from the “Dictation Source” drop-down list:

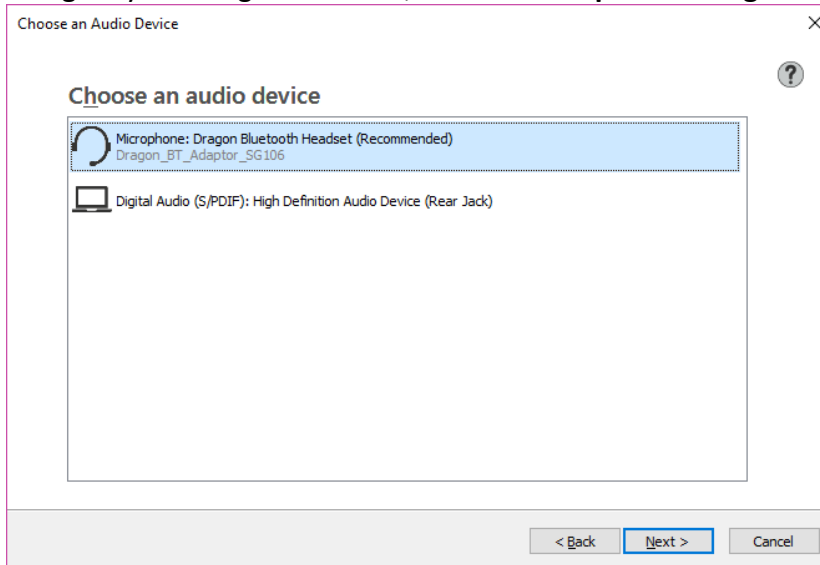


Then “OK” the dialog box and follow the prompts to check you audio settings and train.

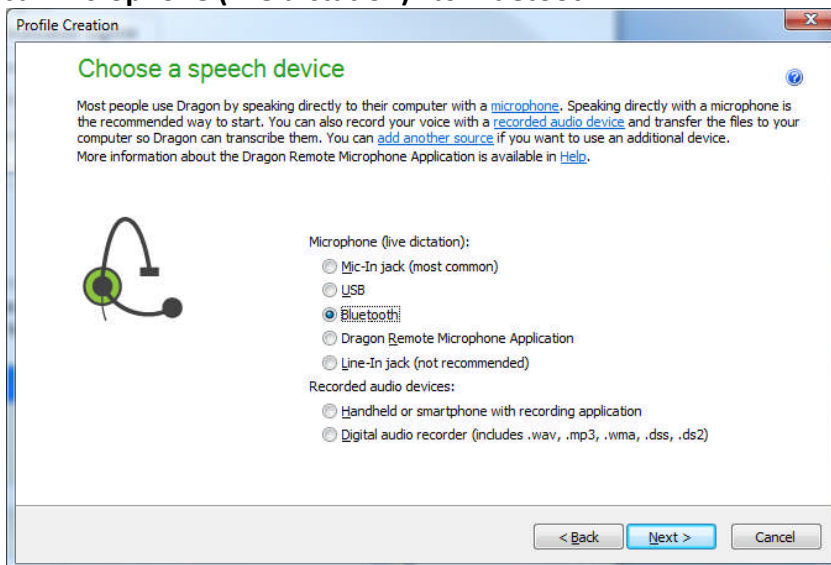
## Scenario 2: New Dragon® user, so create user profile with this mic as dictation source

Create a new user within Dragon:

1. Power on the Headset. The USB Bluetooth adapter should flash blue every one (1) second while the Headset flashes blue every four (4) seconds to indicate the Headset is ready to record.
2. Place the Headset around your ear.
3. Click **Profile > New User Profile > New**  
Or **Profile > Open User Profile > New**
4. Follow the prompts until you get to the “Choose a speech device page” and then, depending on your Dragon® version, select **“Microphone: Dragon BlueTooth Headset”**



Or select **“Microphone (live dictation)” to Bluetooth.**



5. Continue following prompts to finish setting up your user profile.



## Manually "Pairing" Headset with USB Bluetooth Adapter

The headset and USB Bluetooth adapter you have received are wirelessly "paired" to one another at the factory. This procedure should normally not be needed after receiving this input device with your Dragon® product.

However, if you have replaced either component (headset or adapter) the units must be "paired" by following the steps below.

1. Remove the cap on the USB Bluetooth adapter and insert the adapter into a USB port of your computer.



2. To put the headset into "pairing mode," first power the headset off. Four (4) descending beeps are heard when the headset powers off.
3. Once the headset is off, hold down the call control button for 4-6 seconds.
4. Release the button when the indicator lights on the headset begin to flash red and then blue.
5. To put the USB Bluetooth adapter into pairing mode, pinch the pairing/connect button for at least 2 seconds until the adapter flashes red and then blue. Begin pairing with your Bluetooth headset
6. When both the USB adapter and headset are in pairing mode, and within 30 feet of each other, they should connect.
7. The USB adapter should show a solid blue light when connected to the headset.

**CAUTION** When manually pairing the USB adapter, do not press hard. Gently "pinch" with both fingers rather than push on the adapter to avoid damaging the adapter or USB port.

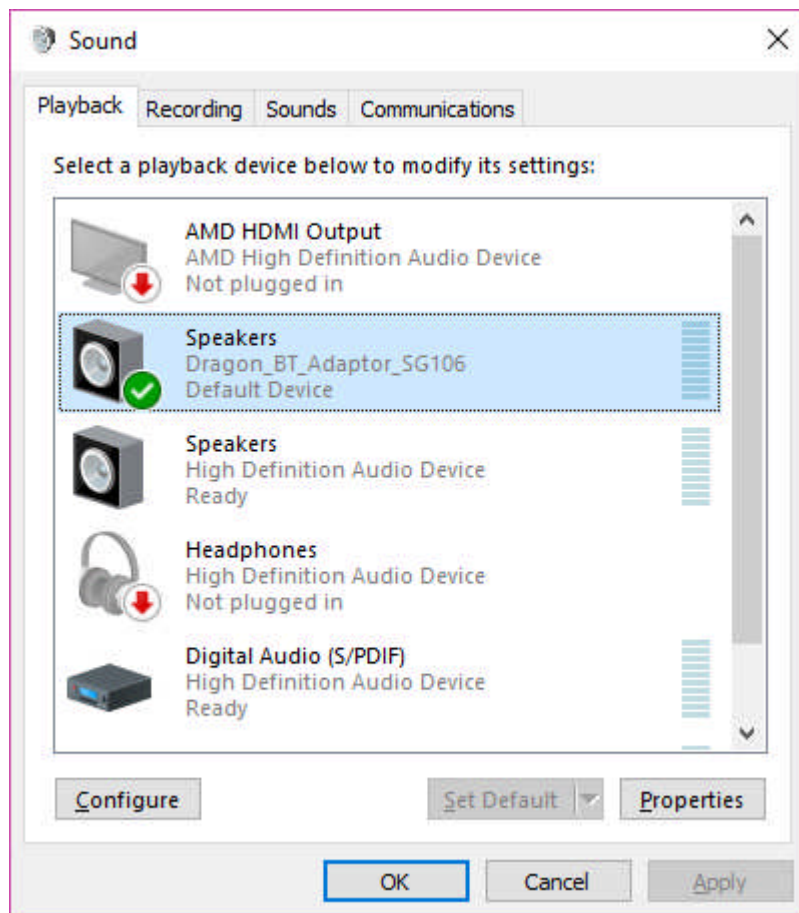
## Adjusting Computer Audio Settings, if needed.

**NOTE:** Menu choices and the appearance of dialog boxes will vary slightly depending on your version/edition of Windows®.

The Dragon® product will control the selection and audio levels of the Calisto mic, once you set up the input source as described above. But, just to know, you can manually select the Plantronics BT mic as your default sound playback and sound recording device within Windows.

Verify/select the Plantronics BT (Bluetooth) Adapter or Dragon BT Adaptor is the audio default device.

1. On your PC, launch the **"Sound"** or **"Sound and Audio Devices"** from the Control Panel and select the **Audio tab**.
2. Under Sound Playback and Sound Recording default devices, make sure **Plantronics BT Adapter** or **Dragon BT Adaptor** is selected.



3. Press **OK**

Contact us with any questions! (Contact info in letterhead.)